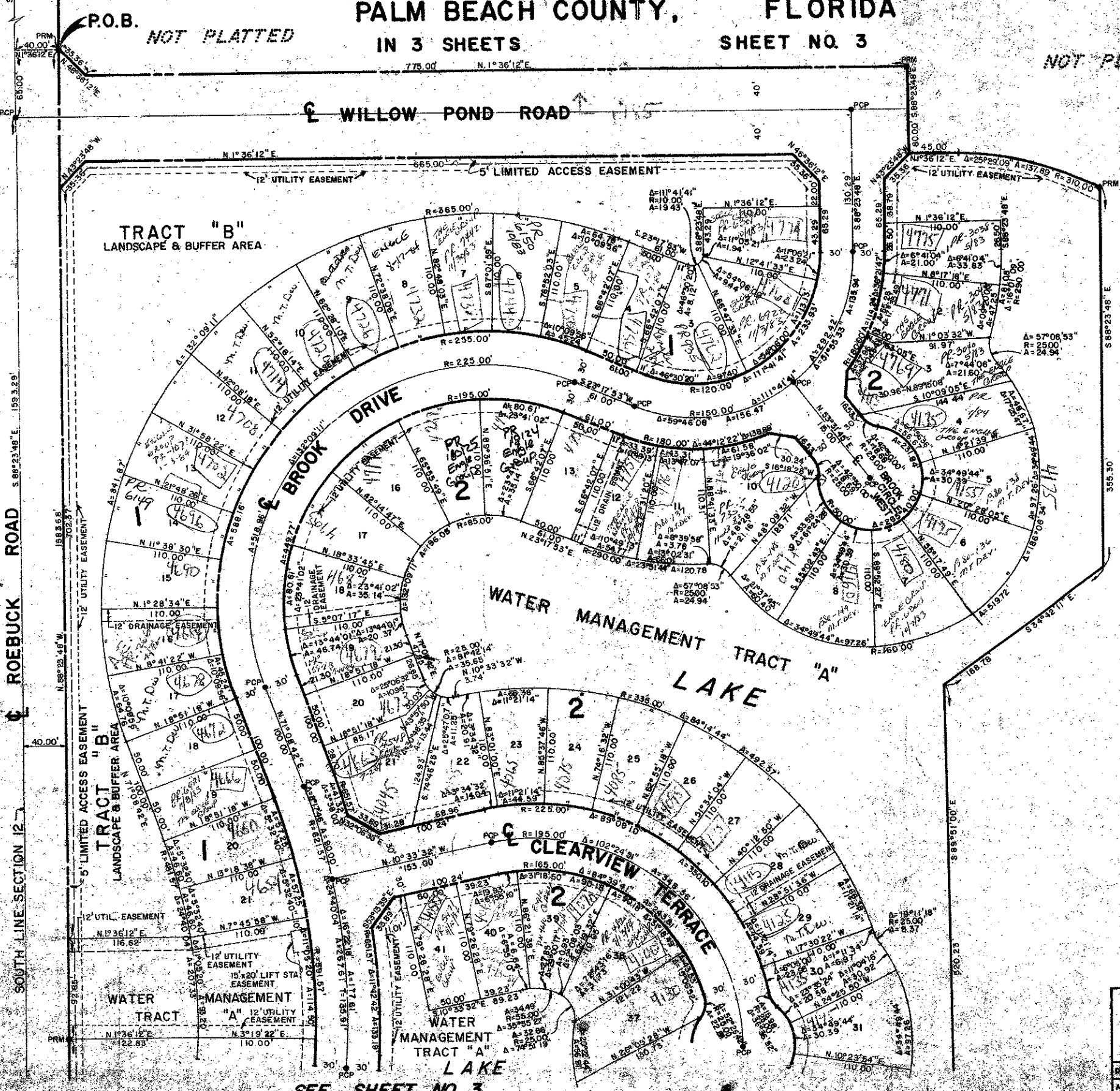
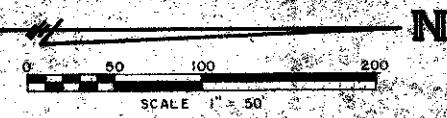


16-04

LAKESIDE GREEN PLAT NO.

SECTION 12, TOWNSHIP 43 SOUTH, RANGE 42 EAST
PALM BEACH COUNTY, FLORIDA
IN 3 SHEETS SHEET NO. 3

STATE OF FLORIDA
COUNTY OF PALM BEACH
This plat was filed for record on
this _____ day of _____
19____, and duly recorded in Plat Book No. _____
on page _____
JOHN B. DONALD, Clerk of Circuit Court
By _____



NOT PLATTED

0265-311

40/21

ROSSI AND MALAVASI
ENGINEERS, LTD.
WEST PALM BEACH,
FLORIDA

A PORTION OF A P.D.D.
LAKESIDE GREEN PLAT NO.
IN 3 SHEETS SHEET NO. 3

SEE SHEET NO. 3